

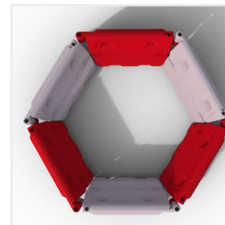
HOG600

Description:

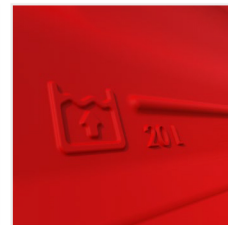
A sturdy and long-lasting Water Separator that has the capacity to hold over 55 litres of water. Incorporating a hook and eye system which provides a simple and prompt installation, with the facility to increase the height to 1.6 metres with the use of the DoubleTop.

Features:

- Designed to be secure and completely anti-trip.
- Hook and eye connection for quick and simple deployment.
- Capacity to over 55 litres.
- Stable & Secure stacking.
- Angular freedom of over 235°.
- Fork lift entry for ease of movement.
- Can be emptied from the top.
- Compatible with other Water Filled systems.
- Compatible with the multi-use DoubleTop
- Can be embossed with corporate logo.
- Manufactured from HDPE
- 100% recyclable.



Looped



Fill Indicator



Run



Height:	560 mm
Width:	1130 mm
Depth:	400 mm
Weight Empty:	5.5 kg
Weight Filled:	60 kg

*All weights are approximate

The information given on these sheets is typical of the product depicted it must not be interpreted as a guarantee of individual product performance and/or characteristics. We reserve the right to alter specifications and designs without prior notice. All measurements are in millimetres (mm)

REMA



FM 673547