

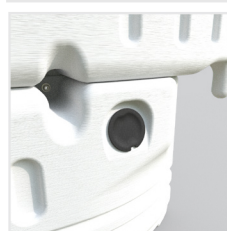
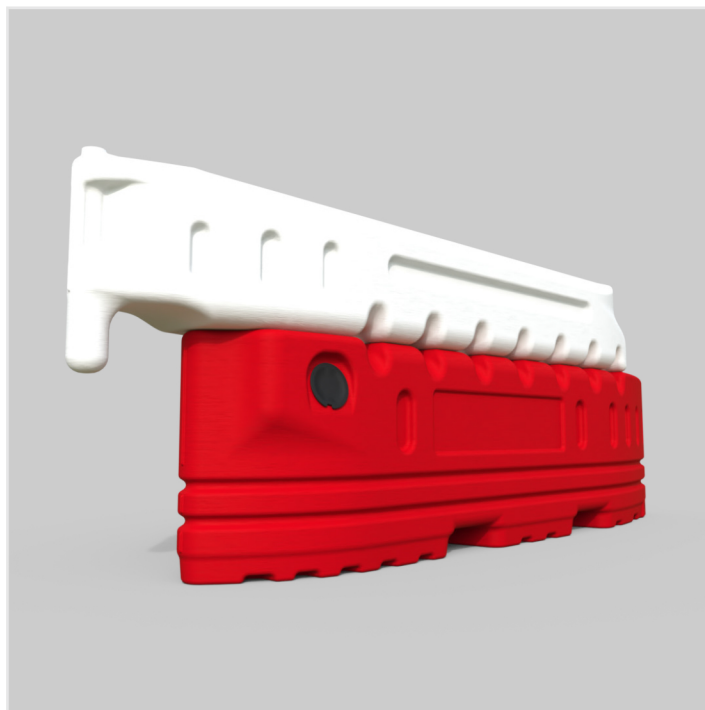
CITYWall

Description:

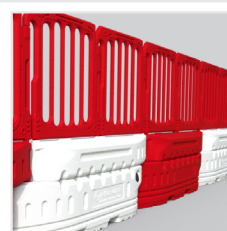
The CityWall is a 2-meter water-filled traffic barrier designed to enhance traffic management on major projects and road safety in urban areas. Filling points on either side allow a safe and quick filling process, whilst a removable bung in the base allows for easy emptying. The most unique feature is that the CityWall can be colour coded top and/or bottom, as well as large areas for logo embossing, resulting in enhanced corporate identity. It is a highly visible and robust barricade that helps to guide and control vehicular movement, whilst ensuring the safety of pedestrians and drivers alike.

Features:

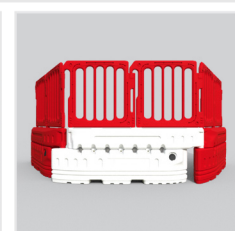
- Hook & Eye connection
- Stays connected at over 280° angular movement.
- Durable & impact resistant.
- Can be filled from either side for additional safety.
- Secure filling cap to prevent unwarranted access.
- Facility for the DoubleTop or Fence hoarding.
- Capacity of over 250 litres.
- Removable plug in the base for easy emptying.
- All-weather resistant - rain and UV Stable.
- Bespoke colours on either top or bottom section.
- Can be embossed with corporate logo.
- Manufactured from HDPE.



Fill Area



Run



DoubleTop



Height:	800 mm
Weight Empty:	21.5 kg
Weight Filled:	271.5 kg
Overall Length:	2295 mm
Working Length:	2040 mm
Depth:	350 mm

*All weights are approximate

The information given on these sheets is typical of the product depicted it must not be interpreted as a guarantee of individual product performance and/or characteristics. We reserve the right to alter specifications and designs without prior notice. All measurements are in millimetres (mm)

REMA



FM 673547